

# APPLICATION NOTE

## 16 Port 10/100TX Ethernet Switch



An exponential increase in the size of files being transferred is occurring with the widespread use of color photo-illustrations on local networks. This trend is rapidly accelerating as users gain access to the Internet's multimedia World Wide Web and its plethora of images.

These large multimedia file sizes tend to choke a busy local network as more users attempt to transfer greater numbers of files.

Most local networks are experiencing a rapid increase in bandwidth requirements. The challenge to a network manager is to provide the dedicated bandwidth to users without having to undertake major structural changes to the network topology or media. Additionally, a solution must be found that will continue to provide dedicated bandwidth as new users are added.

Often mentioned solutions to these challenges are FDDI and ATM. Unfortunately, both of these technologies are expensive, are not necessary for the majority of users, and would require scrapping investments in existing technologies.

100BaseT networks are now available to provide higher bandwidth and are most cost effective when a new network is installed.

A 10Mbps Ethernet Switch, such as the Orbitor 7516, preserves existing 10BaseT NIC & Hub investments while offering a significant performance increase to users.

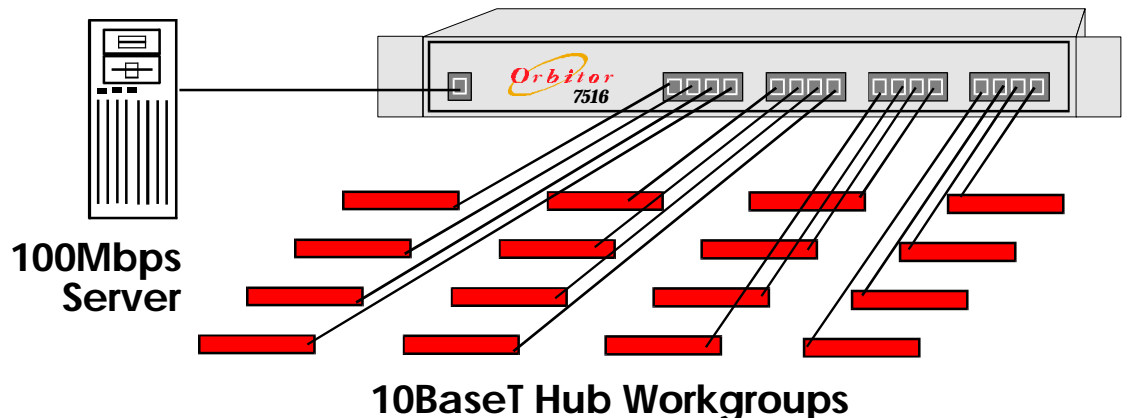
Installing a 100BaseT backbone for a 10BaseT network is an appropriate next-step in a cost effective migration to higher speed networks. The Orbitor 7516 offers a 100BaseTX port option for 100Mbps server or backbone use allowing the network to expand, as needed, to a higher-speed network.

Switched local network topologies are now moving to server and hub 'farms', where 10BaseT hubs are at the workgroup level, workgroups are connected via a switch, and individual switches are connected to a highspeed backbone or to a 100Mbps switch for a master backbone configuration.

### Orbitor 7516 Summary

- Provides full bandwidth to each port
- Allows workgroups to operate at their full potential
- Supports true 802.1D bridging and Spanning Tree with extensive filtering
- 100BaseTX port available as an option/upgrade

### Orbitor 7516 10/100 Mbps Switch



03 May 1996